



# Octo

## Automatic Benchtop Measurement System

### Productivity on the Bench Top

Octo is a high performance yet Affordable deminsional measurement system. Octo offers a choice of three models to suit Your measurement needs.

Octo systems are fully automatic with Motorized precision XYZ stages, Motorized Zoom optics and high resolution digital colour cameras. Measure-x metrology software is equally suited to simple walk-up measurements or fully Automated routines.



### Measurement Ranges

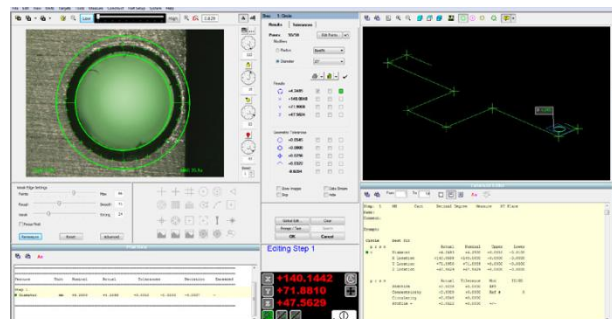
Models	X	Y	Z
Octo 200	200	150	150
Octo 300	300	300	150

### Software that makes measurements simpler

QVI Measure-X software makes it easy to measure parts Or create automatic measurement routines. FeatureFinder Makes it easy to measure any feature in the video Window instantly. If CAD files are available, just download The DXF and let Measure-X create the program for you. AutoCorrelate lets you stage and measure parts without Fixturing.

### Features & Benefits

- Rugged granite base & column
- Precision XYZ stages
- 3-Axis joystick motion control
- 0.5 micron scales on X, Y & Z
- Megapixel Digital Color Camera
- LED backlight and coaxial surface light
- Hgh intensity LED ring light
- Advanced image processing
- Automatic 3-Axis measurements
- Optional TP-20 touch probe
- Optional QVI DRS laser



# Octo

## Features & Technical Specifications

Measuring Unit	200	300
XYZ Travel, mm	200 x 150 x 150	300 x 300 x 150
XYZ Travel, in	8 x 6 x 6	12 x 12 x 6
Weight Approximate, Kg / lbs	110 / 243	136 / 300
System Dimension, mm (XYZ)	625 x 665 x 870	850 x 960 x 870
System Dimension, in (XYZ)	24.6 x 26 x 34	33.4 x 38 x 34

**X-Y Stage** Precision, compound motorized X-Y stage with 3-axis joystick control.

**Recommended Max Load** 20 kg load for the 200 model  
25 kg load for the 300 model

**Scale Resolution (XYZ)** 0.5µm (0.00002")  
Optional scale resolution (XYZ) 0.1 µm (0.000004")

**Optics** Digital camera coupled to a motorized zoom lens, standard VectorLight

**Camera** Megapixel Digital Color Camera

**Field of View** 9.1mm low mag. to 0.6mm high mag. (Diagonal)

**Optionnal Auxiliary Lenses** 0.5x, 0.75x, 1.5x, 2.0x

**Magnification on 24" LCD Monitor** 24x to 370x on-screen digital/optical magnification standard with full feature MX layout  
12x to 1470x on screen digital/optical magnification with optional add on lens and dual monitor user interface.

**Illumination** LED VectorLight (six rings, seven sectors), LED backlight, LED surface (square-on), optional full LED VectorLight (six rings, eight sectors)

**Controller** Windows PC

**Software** Measure-X Metrology Software by QVI, Optional MeasureFit Plus, SmartReport powered by QC-Calc, CAD interface and SmartFeature software for FDA compliant environments.

**Temperature** 20° ±1°C (Rated), 15° - 30° C (Safe Operating)

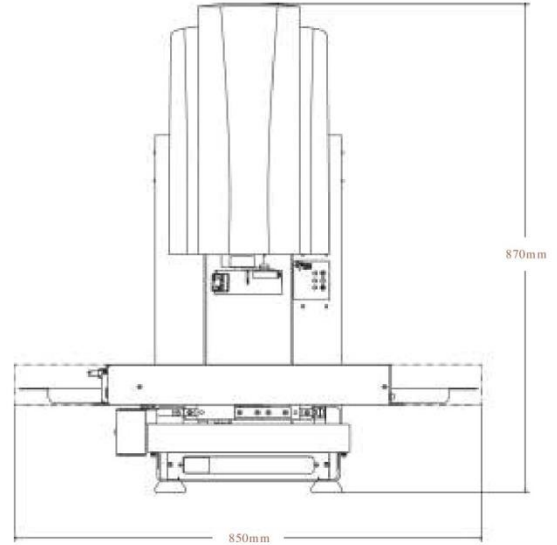
**Power** 100-240 VAC, 50/60 Hz, 1Ø, 500W

**Misc. Options** Manual or motorized rotary indexer, footswitch, dust cover, stage calibration grid.

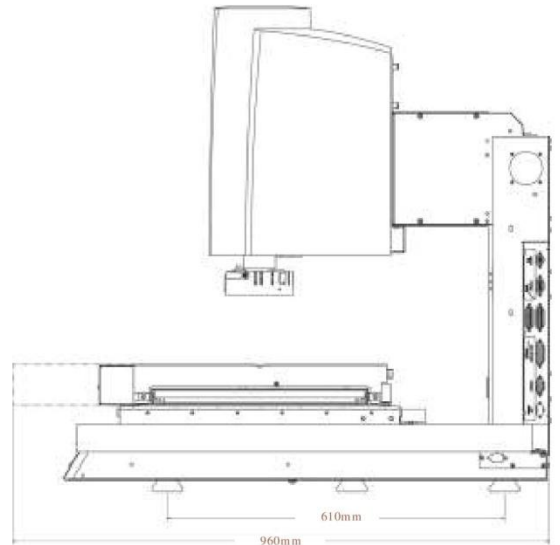
**Sensor Options** TP2- touch probe, touch probe change rack and QVI DRS laser.

**Measuring Accuracy** XY e2= (2.5+4L/1000) µm (Octo 200)  
e2= (2.5+5L/1000) µm (Octo 300)

Z e1= (3.8+8L/1000) µm (All Models)



300 Model Shown



Manufactured by:



Rochester, New York, USA